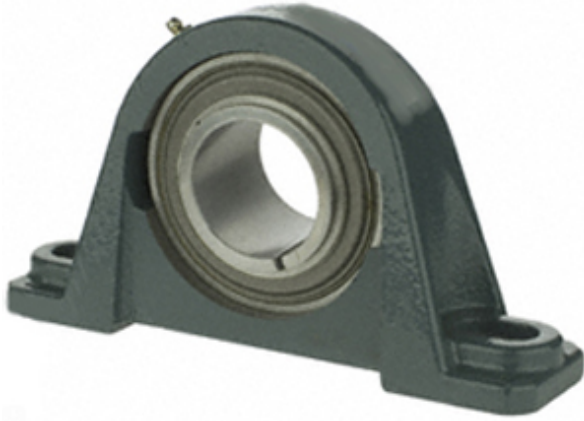




SKF BEARING USA CORP.

2.688 Inch | 68.275 Millimeter x 2.453 Inch | 62.3 Millimeter x 3.5 Inch | 88.9 Millimeter Dodge P2B-GTMAH-211 Pillow Block Ball Bearing Units



Bearing No. P2B-GTMAH-211

P2B-GTMAH-211 Bearing 2D drawings and 3D CAD models

Category	Pillow Block Bearings
Inventory	0.0
Manufacturer Name	ABB MOTORS AND MECHANICAL INC
Minimum Buy Quantity	N/A
Weight	8.75
EAN	0782475880614
Product Group	M06110
Number of Mounting Holes	2
Mounting Method	Tapered Adapter Sleeve
Housing Style	2 Bolt Pillow Block
Rolling Element	Ball Bearing
Housing Material	Cast Iron
Expansion / Non-expansion	Non-expansion
Mounting Bolts	7/8 Inch
Relubricatable	Yes
Insert Part Number	INS-GTM-211
Seals	Single Lip Contact
Housing Configuration	1 Piece Solid
Inch - Metric	Inch
Other Features	Single Row Medium Duty Air Handling Wide Inner Race Thin Wall
Long Description	2 Bolt Pillow Block; 2-11/16" Bore; 3-1/2" Base to Center Height; Tapered



SKF BEARING USA CORP.

	Adapter Sleeve Mount; Ball Bearing; 8-1/2" Minimum Bolt Spacing; 9-1/2" Bolt Spacing Maximum; Relubricatab
Category	Pillow Block
UNSPSC	31171511
Harmonized Tariff Code	8483.20.40.40
Noun	Bearing
Keyword String	Pillow Block
Manufacturer URL	http://www.dodge-pt.com
Manufacturer Item Number	P2B-GTMAH-211
Manufacturer Internal Number	129241
Weight / LBS	24.9
d	2.688 Inch 68.275 Millimeter
Bolt Spacing Maximum	9.5 Inch 241.3Millimeter
B	3.5 Inch 88.9 Millimeter
Bolt Spacing Minimum	8.5 Inch 215.9Millimeter
Nominal Bolt Center to Center	9 Inch 229 Millimeter
D	2.453 Inch 62.3 Millimeter
Actual Bolt Center to Center	0 Inch 0Millimeter